

Product Change Notification

CHANGE NOTIFICATION	CHANGE TITLE	PRODUCT FAMILY	DATE OF PUBLICATION	PRODUCT PART NUMBER
2020-05-001	COMTRAXX - Update V4.0.2	COMTRAXX	May 28, 2020	See part number list
TYPE OF CHANGE	CLASSIFICATION OF CHANGE ¹⁾	PRODUCT CATEGORY		DEPARTMENT / LOCATION
SW	C	Condition Monitor / Gateway		PGM-COMTRAXX

- ¹⁾ A: Stop of production or design change with influence of approval
 B: Small change in design without influence of approval
 C: No influence of product

DESCRIPTION OF CHANGE:

New software update for all devices of the COMTRAXX series. This contains a lot of new functions and improvements. Some points:

- The Microsoft Silverlight application is no longer necessary for COMTRAXX devices
- SNMP Traps are integrated
- Easier and faster system configuration due to different changes
- Improved Modbus communication: Configuration, speed and alarming

REASON FOR CHANGE:

Extension of functionality and integration of the newest software standards.

KEY CHARACTERISTICS OF CHANGE:

Software

ENGINEERING CHANGE EFFECTS:

Generated visualizations in Silverlight disabled. This must be rebuilt in the new html-based solution.

PART NUMBER LIST:

B95061065 COM465IP-230V	B95061066 COM465IP-24V
B95061060 COM465DP-230V	B95061061 COM465DP-24V
B95061030 CP700	B95061080 CP907
B95061081 CP915 WHITE	B95061085 CP915 GRAY
B95061083 CP924 WHITE	B95061084 CP924 GRAY

DETAIL INFORMATION:

IMPORTANT BEFORE UPDATE

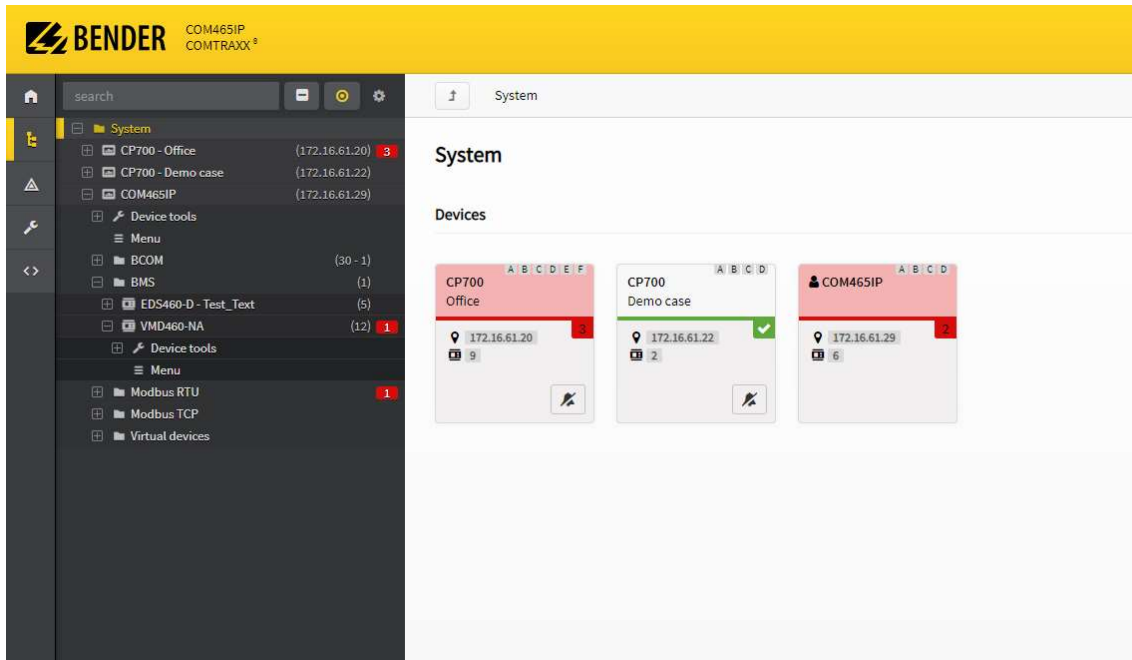
- All COMTRAXX® devices in a system must be updated to V4.0.2 to be able to continue to communicate with each other.
- In the future, V4.0.2 will always be the basic version for COMTRAXX® devices. Therefore, a smaller version must always be updated to V4.0.2 before future updates can be installed.
- Many configuration files have changed, therefore an integrated converter must be run through after the update to ensure that all settings are still active. This only needs to be initiated and then runs automatically.
- The Silverlight application has been completely removed. The images stored in the visualization can still be downloaded after the update. The new visualization has been integrated into the HTML application.
- The bus overview is now displayed sorted by interfaces. However, you can still sort by subsystems. The display view is selectable.
- POWERSCOUT®: If POWERSCOUT® is used, the connection must be reconfigured after the update, otherwise no data will be uploaded. See POWERSCOUT_D00420_Q_DEEN.

Features

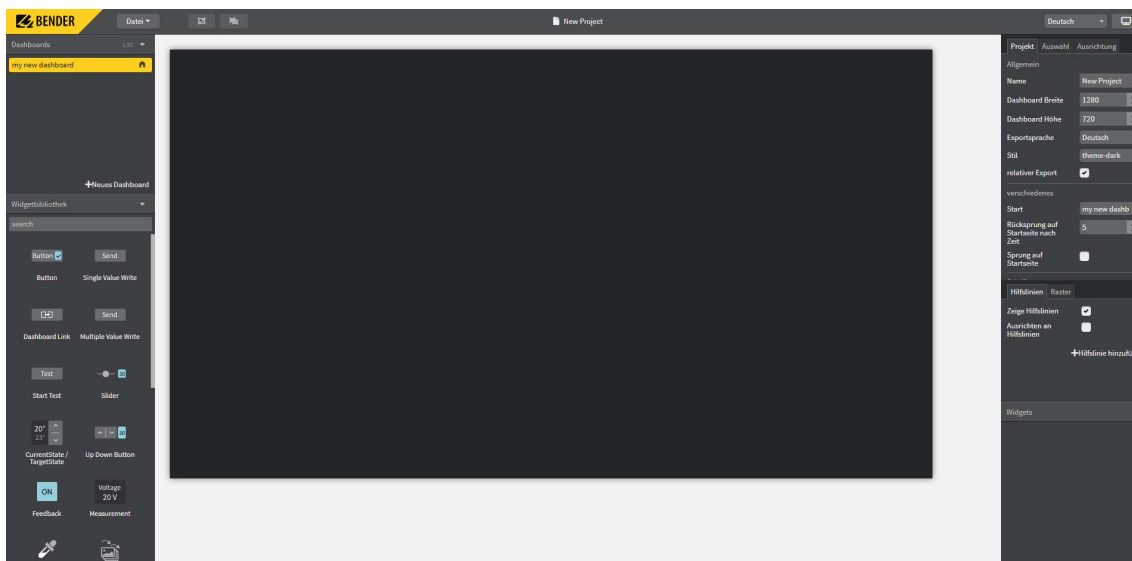
- Two system views
 - New hierarchical representation by interfaces
 - Old representation by subsystems
 - Navigation can be carried out via the tree view or the content area
- New internal addressing
 - A device is now described by an absolute topic (unique address), and no longer by subsystem/device address. Each interface has its own address space.
 - Thus, it is now possible to assign the same address to several interfaces. For example, a Modbus RTU and BMS device can now each be operated with address 2 without colliding.
- Modbus device integration
 - Modbus channel templates can now have up to 128 channels.
 - Modbus devices can be integrated via Excel export/import.
 - Channel templates of Modbus devices can be exported and imported.
 - Modbus port for slave devices can be set.
 - The following Modbus function codes are now supported:
 - FC01 (0x01) - Read Coil Status
 - FC03 (0x03) - Read Holding Registers
 - FC04 (0x04) - Read Input Register
 - FC15 (0x0F) - Force Multiple Coils
 - FC16 (0x10) - Preset Multiple Registers
- The visualization has been integrated into the HTML application. It is configured using an integrated editor, and is then displayed in a browser tab. The individual functions are stored in a widget library from which individual solutions can be integrated. Silverlight has been completely removed from the application.
- BMS devices will now always be displayed with at least 12 channels. This means that you always have access to this channel information in the application, even if no message is pending.
- COMTRAXX® devices can now be reset to factory settings (optionally with or without resetting the Ethernet settings).

- New access to the device data from outside
 - Modbus data image
 - New Bender Modbus image V2 has been integrated. Necessary to map the new address structure to Modbus and to provide all data correctly.
 - Old Bender Modbus image V1 remains available. It can be selected which image should be active. After an update V1 remains active. On new devices that are delivered, V2 is active. However, V1 only works correctly as long as there are no address collisions on the interfaces. For new systems it is strongly recommended to always use V2, as this ensures error-free data retrieval.
 - Each interface has its own address space, through which the data is provided.
 - Mapping tables for Modbus, PROFIBUS and SNMP. There it is defined for each interface which devices connected to it make their data accessible from outside in which order. The devices are assigned via unit IDs.
 - Modbus: This configuration of the mapping tables is only necessary if the menu parameters of the devices are to be accessed from outside via Modbus TCP (FC03 - Read Holding Registers). Existing systems continue to run if Bender Modbus image V1 is configured. A maximum of 255 devices can be addressed.
 - PROFIBUS: Existing systems continue to run as usual after the update. To map the data correctly according to the new addressing scheme, message types 5, 6 and 7 have been introduced. This gives access to all measured values and device parameters of the devices listed in the mapping table. A maximum of 65,535 devices can be addressed there.
 - SNMP: Existing systems continue to run as usual after the update. To map the data correctly according to the new addressing scheme, the SNMP MIB V2 is required. This is located on the device for download. It gives access to all measured values of the devices listed in the mapping table. A maximum of 65,535 devices can be addressed there.
- SNMP traps are now supported (active alarming).
- Excel export/import is provided for several functions. This ensures easier and faster configuration of these services.
 - Individual texts
 - Modbus device integration
 - Alarm addresses
- CP700 - New display application with new addressing scheme, performance improvements and better usability.

Application pictures



New system overview with explorer area and content area.
In both areas it is possible to navigate through the system and access the contents.



New editor for the html-based visualization.

Issued by	Jan Hofmann	Date	May 28, 2020
-----------	-------------	------	--------------